



Fann Software OIMail Reader & Exporter

Users' Guide

Version 2.01

May 3, 2021

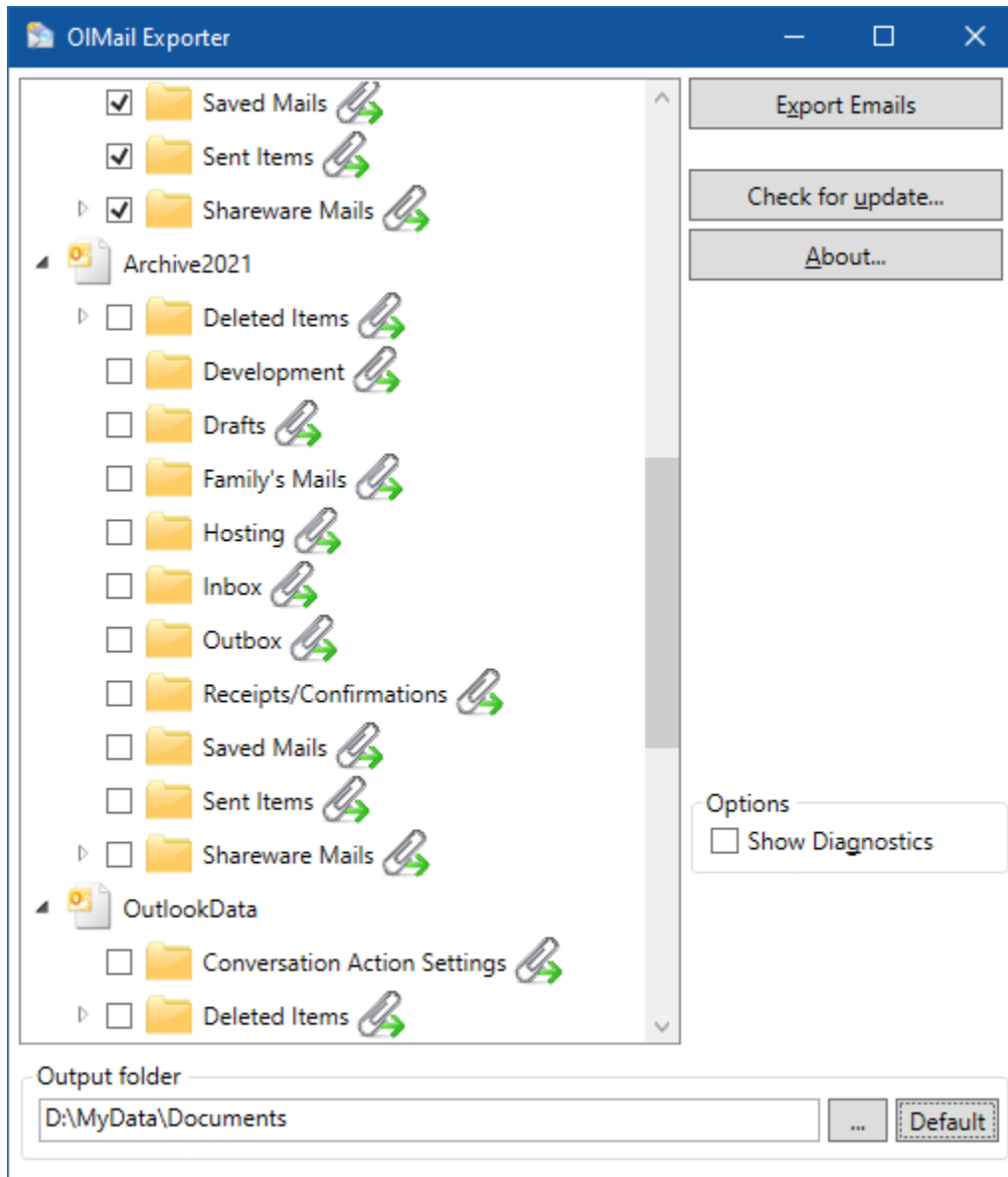
Copyright © 2021, Fann Software
All rights reserved




<http://www.fannsoftware.com>
support@fannsoftware.com

| | |
|--|---|
| Using OIMail Exporter | 1 |
| Copy OIMail Reader Data to Android Device..... | 3 |
| Using OIMail Reader | 5 |
| Change Email Folder..... | 6 |
| Options..... | 7 |



Using OIMail Exporter



1. Click Start Menu→All Programs→OIMail Reader→OIMail Exporter.
2. Check the desired folders from the displayed list for export.
3. (Optional) Toggle the Export attachments icon () to specify the desired folder(s).
4. (Optional) Enter or click the ... button to select an output folder. Click the Default button to use the default folder.
5. Click Export Emails to continue.
6. (Windows 7 only) Read the warning message. Click OK to continue.
7. (Windows 7 only) Check the Allow access check box and select 10 minutes in Outlook warning dialog box.
8. (Windows 7 only) Click Allow to continue.

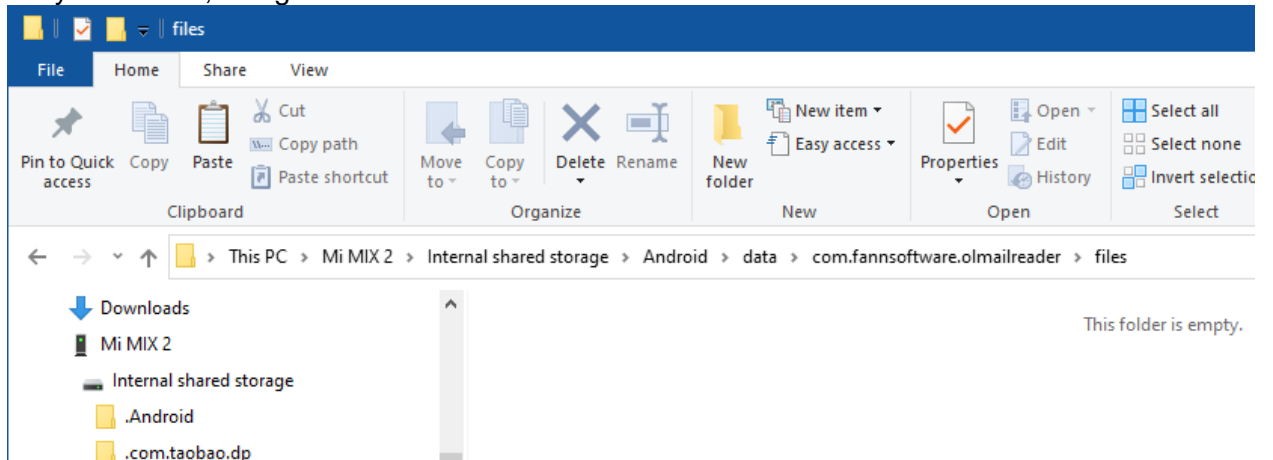
9. The Export Completed screen will display if the process is successful. Depending on the amount of data, the process may take a few minutes.
10. Click Close to exit OIMail Exporter.

Note:

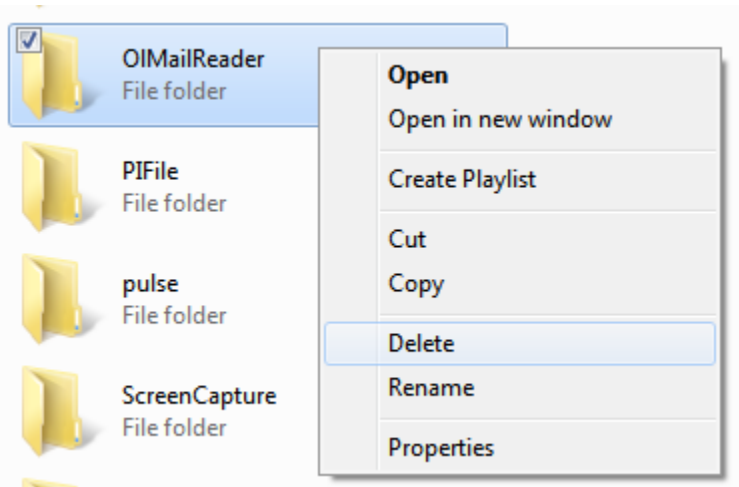
- To select all sub-folders, right click on the parent folder to display the context menu and select Select All Children.
- Icon legend:
 -  Export attachments for the folder
 -  Do not export attachments for the folder

Copy OIMail Reader Data to Android Device

1. In OIMail Reader, touch the Back key to close the application.
2. Connect your Android device to the computer using the USB cable.
3. Open Windows Explorer.
4. Navigate to the output folder set in OIMail Exporter and select the OIMailReader folder. The default output folder is Documents.
5. Right click to display the context menu and select Copy.
6. On your device, navigate to **/Android/data/com/fannsoftware.olmailreader/files**.

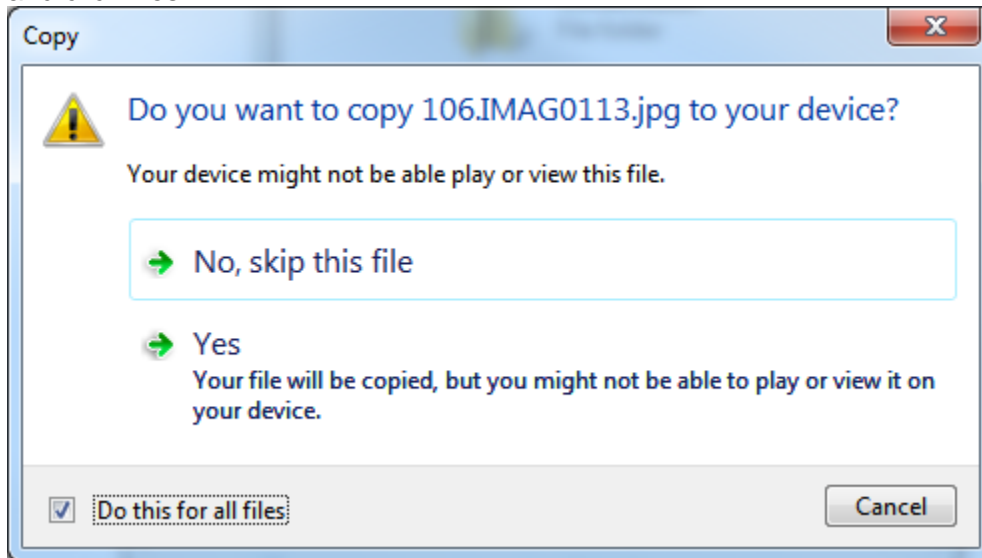


7. Delete the OIMailReader folder on the device (except on the first run), click Yes to confirm.



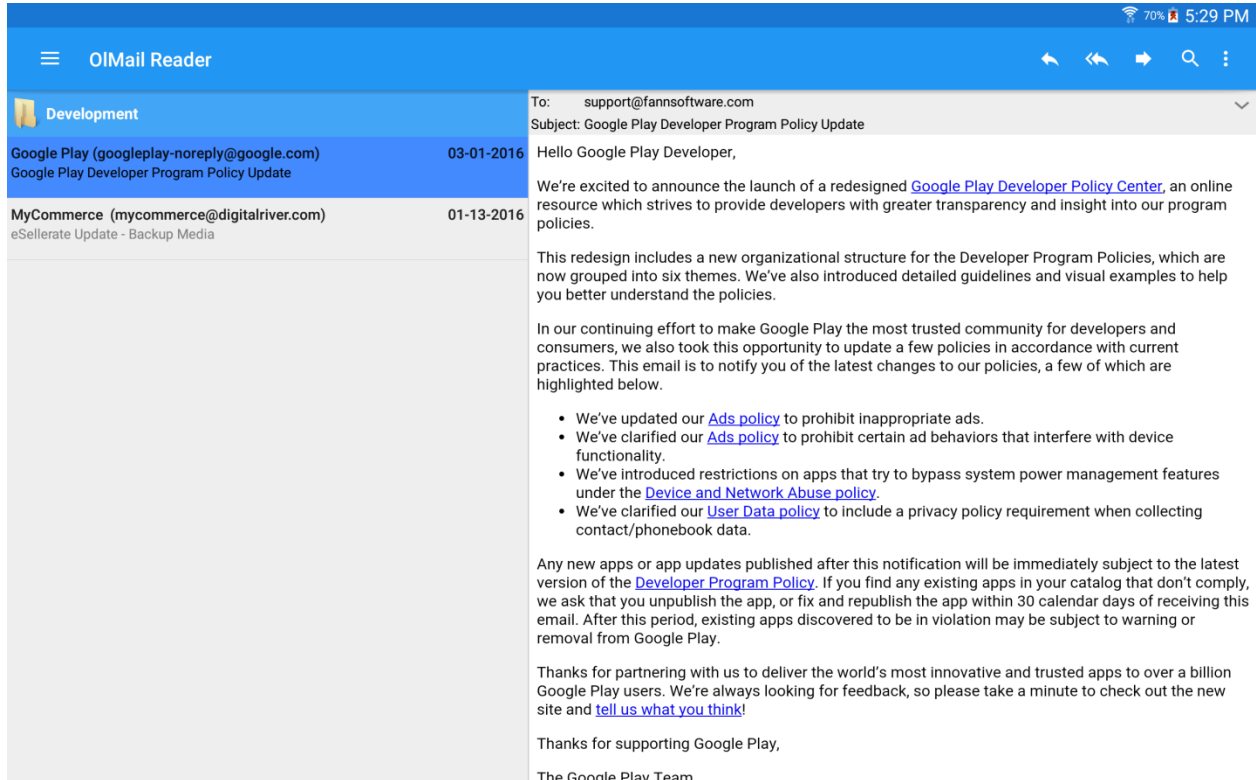
8. Right click to display the context menu and select Paste.

9. If you are prompted with a dialog box similar to the following, check Do this for all files and click Yes.



10. When the copy process is finished, disconnect your Android device from the computer.

Using OIMail Reader



The main screen is divided into 2 panes.

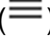
Left Pane

The list screen displays emails in list style. The header area displays the name of the current email folder.

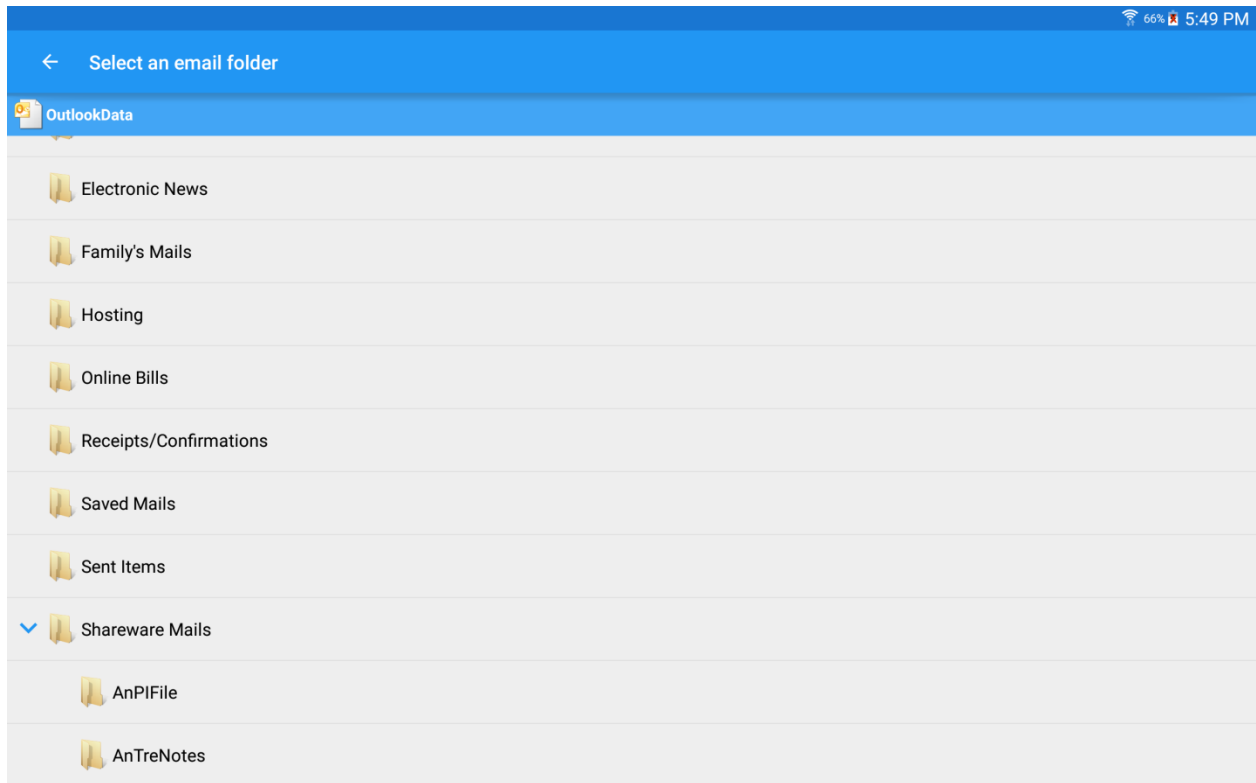
Right Pane

The preview screen displays the selected email.

Action Bar

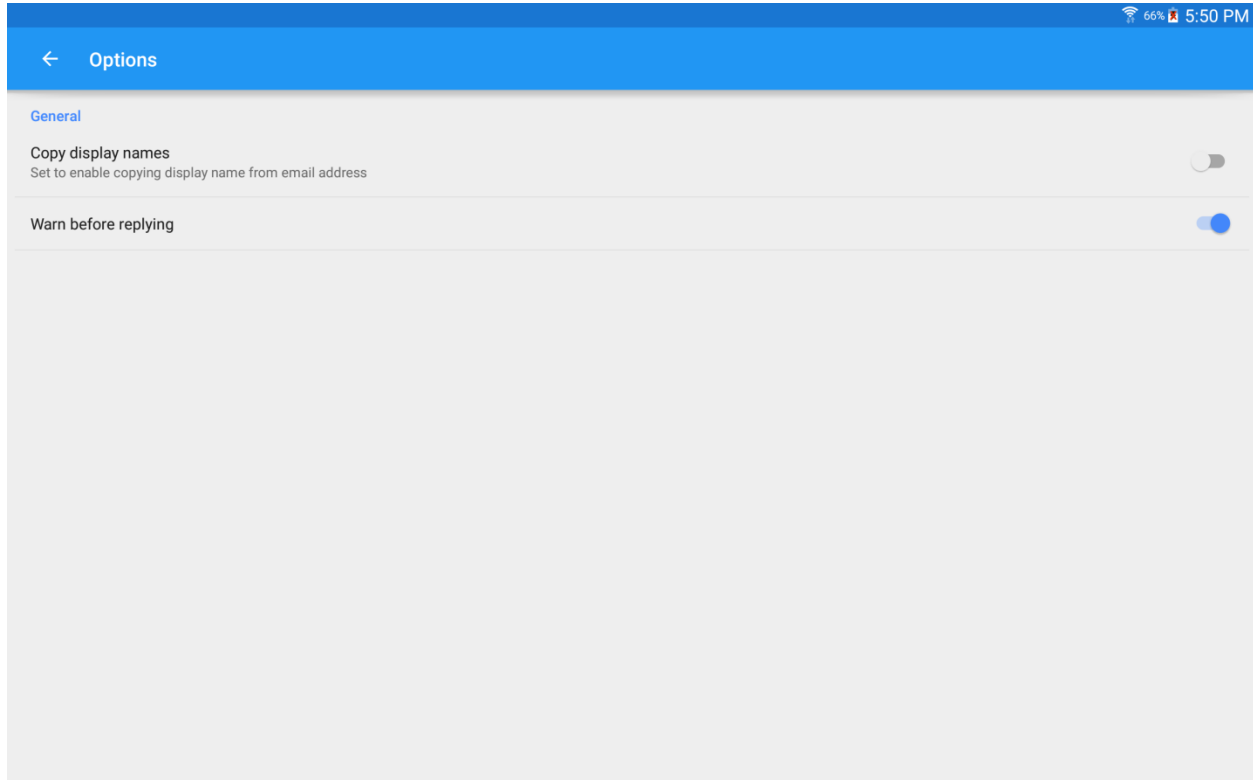
- Touch the left drawer action item () to select another PST file.
- Touch the Search action item to search emails in the current folder.
- Touch the Menu action item for other options.

Change Email Folder



Touch the folder name to change folder. Touch the level indicator (>) to expand/collapse.

Options



To change options, touch the Menu action item and select Options.

| Field | Description |
|----------------------|--|
| Copy display names | Set to enable copying display name from email address |
| Warn before replying | Set to enable a warning message whenever the Reply or Reply all action item is touched |